

feature that make

Your House Your Home


SILVER OAK
RESIDENCY
Cherlapally, Hyderabad



**MODI
PROPERTIES**

www.modiproperties.com

SILVER OAK RESIDENCY

Cherlapally, Hyderabad

Silver Oak Residency is ideally located for development of quality housing with modern amenities in a well developed locality, yet with a very affordable price. Silver Oak Residency is situated in a serene, peaceful, traffic free and pollution free environment. Ample ground water will enable maintenance of a green cover in the gated community.

Modi Properties has completed 450 villas and 120 apartments in Cherlapally, Hyderabad.

Our homes are designed to provide a great lifestyle product to our customers. The gated community is designed to control the environment around your home. Enjoy great quality, fabulous amenities at reasonable prices!

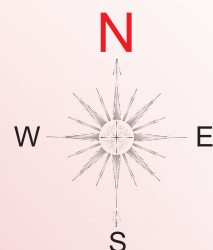
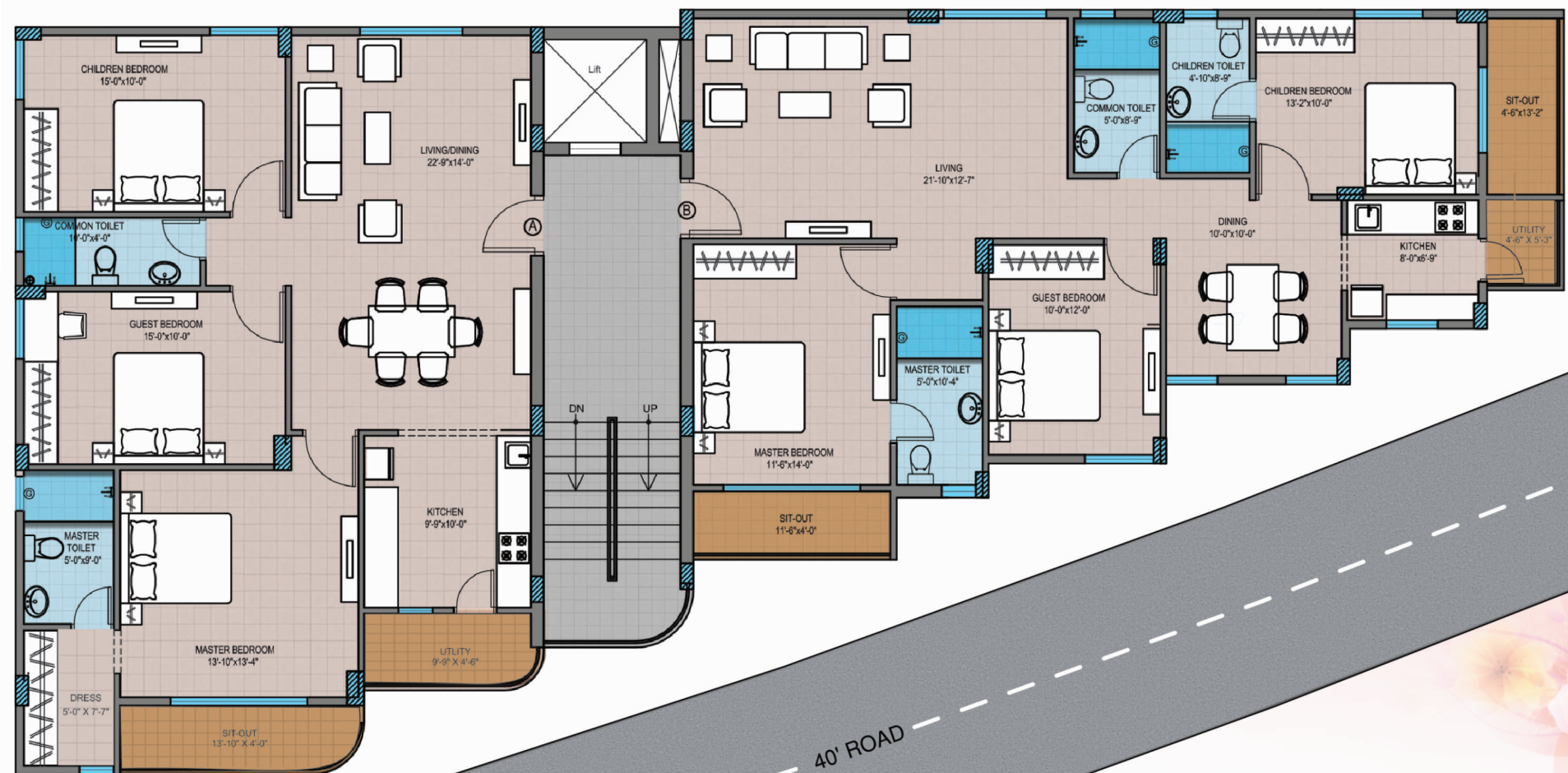
Salient Features

- Ready to occupy.
- 3BHK flats - 1,620 sft.
- Low density development with large open spaces.
- GHMC approved.
- Clear title.
- Design as per vastu.
- Gated community with swimmingpool, clubhouse and modern amenities.
- Pollution free environment.
- No GST.

Amenities

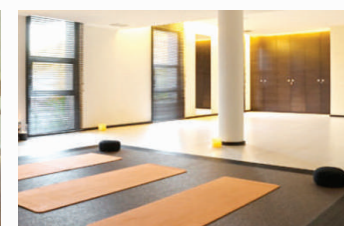
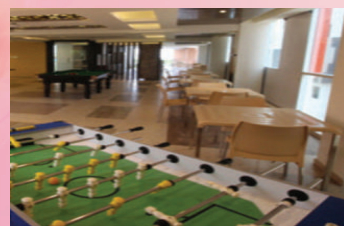
- Clubhouse with
 - Banquet hall.
 - Recreation room cum cafeteria.
- Creche.
- Society office.
- First-aid room.
- Gym.
- Yoga room.
- Lawns for banquets.
- Landscaped gardens.
- Swimming pool.
- Sports facilities.
- Children's park.
- Drinking water through RO plant.
- 1 KVA backup power for each flat.
- 24 hours security with CCTV.
- Wi-fi Security.

LAYOUT PLAN

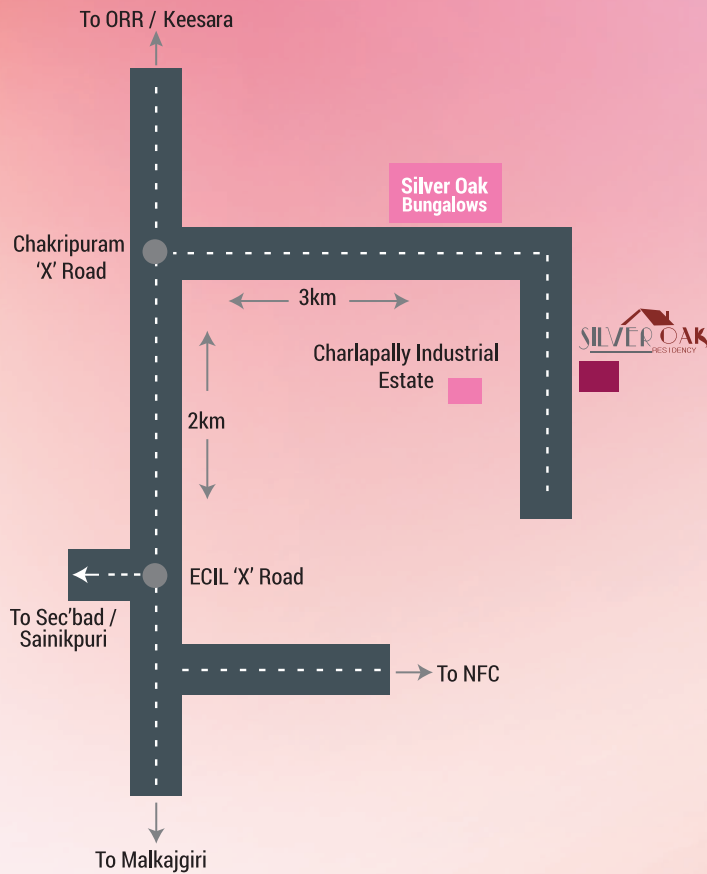


Promoters Track Record

- 40+ years experience.
- 4+ million sft of construction completed.
- 3,500+ homes completed.
- 2+ million sft under construction.
- 4+ million sft of construction completed.
- 1,000+ homes under construction.



Location Plan



- Next to Govt. of India, Mint and Cherlapally Industrial area.
- Connected by 100 ft main road.
- Close to proposed MMTS station.
- 10 minutes drive from ECIL cross roads - 5 kms.
- 15 minutes drive from Neredmet cross roads - 9 kms.
- 15 minutes drive from Infosys / Mindspace - 9 kms.
- 20 minutes drive from Trimulgerry cross roads - 12 kms.

Proposed Projects

Boomdale Villas @ Genome Valley

Shamirpet, Hyderabad
170 flats+8 villas on 2 acres

Marrigold Residency

Kompally, Hyderabad
180 flats on 2 acres

Nilgiri Heights

Pocharam, Hyderabad
272 flats on 2.5 acres

Mayflower Homes

Dundigal, Hyderabad
145 villas on 10 acres

Bluebell Residency

Vikarabad, Hyderabad
110 flats on 1 acres

East Side Residency

Pocharam, Hyderabad
750 flats on 6 acres

Completed Projects



Gulmohar Gardens
Mallapur, Hyderabad
505 flats on 8 acres



Paramount Residency
Nagaram, Hyderabad
260 flats on 3 acres



Greenwodd Residency
Kowkur, Bollaram, Secunderabad
345 flats on 6 acres



Mayflower Grande
Mallapur, Hyderabad
370 flats on 3 acres



Mayflower Park
Nacharam, Hyderabad
505 flats on 4.8 acres



Mayflower Heights
Mallapur, Hyderabad
280 flats on 4 acres



Silver Oak Bungalows
Cherlapally, Hyderabad
250 duplex bungalows on 24 acres



Paramount Avenue
Nagaram, Hyderabad
208 flats on 2 acres



Silver Oak Apartments
Cherlapally, Hyderabad
120 flats on 1 acre



Villas At Silver Creek
Nagaram, Hyderabad
44 villas on 3 acres



Serene Farms
Yenkeppally, Chevella
50 farmhouses on 32 acres



Villa Orchids
Kowkur, Secunderabad
343 duplex villas on 21 acres



Nilgiri Homes
Rampally, Pocharam, Hyderabad
95 villas & town houses on 6.5 acres

Current Projects



Vista Homes
Kushaiguda, Hyderabad
403 flats on 5.6 acres



Gulmohar Homes
Miryalguda, Hyderabad
91 flats on 6.5 acres



Greenwood Heights
Kowkur, Hyderabad
119 flats on 2 acres



Gulmohar Residency
Mallapur, Hyderabad
354 flats on 8 acres



Nilgiri Estates
Rampally, Pocharam, Hyderabad
188 villas on 10 acres



Bloomdale
Shamirpet, Hyderabad
72 villas on 5 acres



Mayflower Platinum
Mallapur, Hyderabad
189 flats on 2.2 acres



Silver Oak villas-Phase III
Chierlapally, Hyderabad.
114 villas on 7.5 acres.



Morning Glory Apartments @ Genome Valley
Shamirpet, Hyderabad
30 flats on 1,122 sq.yds.



Bloomdale Residency @ Genome Valley
Shamirpet, Hyderabad
30 flats on 1,122 sq.yds.



H.O.: 5-4-187/3&4, II floor, M.G. Road, Secunderabad- 03
Ph: +91-40-6633 5551, email: info@modiproperties.com

SITE OFFICE:

Sy. No.294, Cherlapally, Hyderabad - 500 051.
Ph: +91-99635 92343. email: sov@modiproperties.com



www.modiproperties.com

Note : This brochure is only a conceptual presentation of the project and not a legal offering. The promoters reserve the right to make changes in the elevation, plans and specifications as deemed fit.